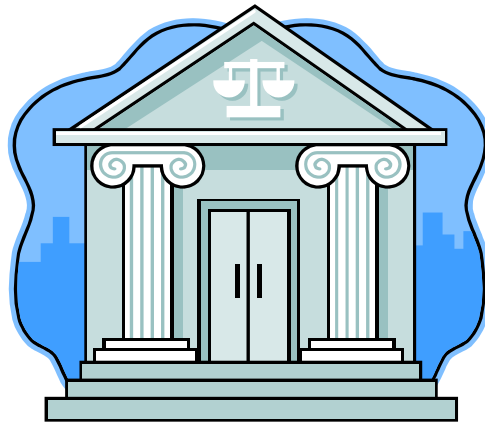


# **Darke County Probate/Juvenile Court**



**2010  
Annual Report  
Jason Aslinger  
Judge**



**Judge Jason Aslinger**  
**Probate and Juvenile Judge**

My position as Judge of the Darke County Probate/Juvenile Court is unique in that I serve as both Judge and Clerk of the Courts. In both capacities, my staff and I are committed to providing a fair and impartial administration of justice, as well as prompt, courteous and efficient service to the public.

### **Mission Statement**

It is the mission of the Darke County Juvenile Court to promote community safety, hold youth and parents accountable, provide treatment toward the goal of reducing recidivism and helping youth reach their potential as worthy and valuable citizens. To accomplish our mission, we dedicate ourselves to excellence in public service by:

- Being honest and ethical
- Creating a safe and caring environment
- Respecting the rights of each person
- Developing a team of well trained, competent and highly motivated employees
- Being open and responsive to creative ideas
- Cultivating community partnerships
- Recognizing achievement and success

# Judicial Staff

## Darke County Juvenile and Probate Court



**Jody Cantrell**  
Court Administrator



**Jim Detling**  
Magistrate



**Tom Fourman**  
Baliff



**Claudia Shepherd**  
Chief Deputy Clerk  
Probate



**Patty Fellers**  
Chief Deputy Clerk  
Juvenile



**Stephanie  
Brumbaugh**  
Deputy Clerk  
Juvenile



**Liz Lewis**  
Deputy Clerk  
Probate and Juvenile



**Julie  
Rademachir**  
Deputy Clerk

### Clerks Office

The Juvenile and Probate Clerks office is open from 8 a.m. to 4:30 p.m.  
Monday through Friday.

Each clerk has specific duties and responsibilities as the assigned case manager of their case type. In addition, all clerks share the more routine duties, as well as counter duty, on a rotating schedule basis.

## CHARGES FILED

CHARGE	2010	2009	2008
ABUSE/NEGLECT/DEPENDENCIES	29	24	43
SUPPORT	145	128	144
PERMANENT CUSTODY	0	3	1
PATERNITY	17	13	21
CUSTODY	<b>21</b>	<b>12</b>	23
DELINQUENT	247	398	452
UNRULY	69	86	83
ADULT	18	55	24
TRAFFIC	233	280	291
<b>TOTAL</b>	<b>779</b>	<b>999</b>	<b>1082</b>

## MOST COMMON DELINQUENT/UNRULY CHARGES

CHARGE	2010	2009	2008
UNRULY	43	89	65
ALCOHOL RELATED	28	58	59
DRUG RELATED	21	37	38
THEFT	59	64	32
ASSAULT	23	26	27
<b>TOTAL</b>	<b>174</b>	<b>274</b>	<b>221</b>

## MOST COMMON TRAFFIC VIOLATIONS

CHARGE	2010	2009	2008
SPEED	106	61	110
SEAT BELT	8	22	31
FAILURE TO CONTROL	20	25	27
ACDA	18	7	20
STOP SIGN	22	9	19
<b>TOTAL</b>	<b>174</b>	<b>124</b>	<b>207</b>

# Traffic Diversion Program

## CARTEEN

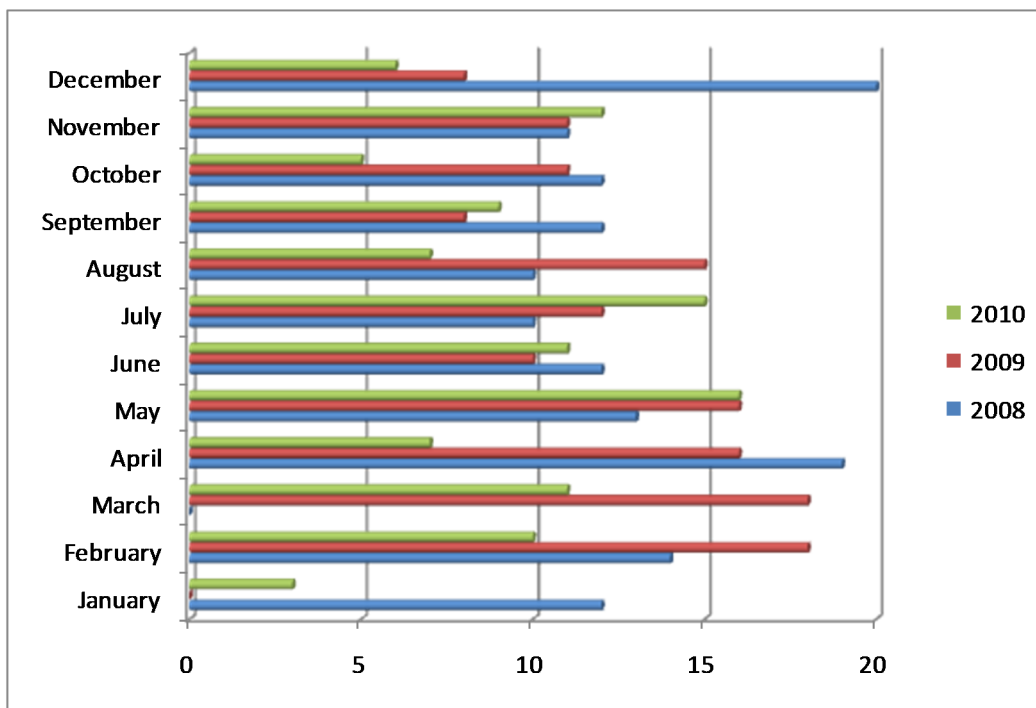
Darke County Juvenile Court feels the automatic suspension and many other requirements of the Ohio Revised Code 4507.162 at times are too harsh for many of the traffic violations. Therefore, the court developed a traffic diversion program.

Teen traffic offenders eligible for the diversion program are: first offenders and speed less than 20 miles per hour over the posted speed limit; stop sign violations; and non-injury accidents.

Teen traffic offenders are not eligible for the diversion program if cited for: reckless operation; speed 20 miles per hour or higher over the posted speed limit; passing a school bus; injury accidents (any person transported to the hospital); no operator's license; driving under the influence; or any other offense considered serious by the court.

The Diversion program consists of the following:

1. Custodial parent and juvenile must sign a written agreement to be returned to the court prior to the designated court date.
2. Court cost must be paid and accompany the agreement
3. Juvenile and custodial parent must attend and successfully complete the CARTEEN Program and pay the cost of the course. The program is a two hour course.



# Diversion Program

## Diversion Officer: Robb M.J. Fulker

The Diversion Program was established as a way to educate not just punish low offending juveniles. The program allows for juvenile offenders to be diverted from formal court proceedings.



In order to qualify for the Diversion Program the following criteria must be met:

1. The citation must be a Misdemeanor or Unruly.
2. The accused must be a first time offender or have a minimum of two years without a court conviction.
3. The accused must admit to the charge.
4. The accused must not have previously completed the Diversion Program.\*
5. The accused must sign an agreement to participate in the Diversion Program.
6. The accused must agree to pay a \$125.00 fee.

After qualifications have been determined, the juvenile offender will be set for a Diversion Hearing. During this hearing, the juvenile and his/her parents will enter into a ninety (90) day contract with the Diversion Officer. By signing the contract, the juvenile agrees to abide by specific rules that include a curfew, drug screens, obeying all laws, obeying parents, cooperating with the Diversion Officer, attending school and complying with school rules, refraining from drug and alcohol use, and not have any involvement with other juveniles currently on Probation or Diversion with the court. Further requirements may be added if the Diversion Officer feels it is necessary.

Once the contract has been signed, the next step is for the Diversion Officer to follow-up on the juvenile offender's progress. This is done through home visits, school visits, phone calls to parents and involved agencies, and curfew checks. Failure to meet any one of the requirements stated in the contract will result in further penalties. A typical penalty consists of a contract extension, additional community service, essays, and/or house arrest.

If the juvenile offender has fulfilled all the requirements of his/her contract the court will dismiss the charge.

All records will be sealed and the juvenile will be able to claim no past involvement with the Darke County Juvenile Court.

### JUVENILES PLACED ON DIVERSION

COMPLETION	2010	2009
SUCCESSFUL	109	164
UNSUCCESSFUL	11	9
<b>TOTAL</b>	<b>120</b>	<b>173</b>

## Anti-Bullying Program

Mr. Fulker has been presenting this program to several schools in the county as a proactive approach in addressing the recent rise in bullying incidents. His presentation is conducted along with Gail Whittington from Darke County Recovery and has been presented to individual classrooms as well as across several grades in an auditorium situation. Mr. Fulker educates the children on how to spot a bully, what to do if you are in a bullying situation, if you are a victim or even a witness among other important facts. This program has been a very powerful approach and has received positive feedback from the community and from the various schools where it has been presented.

# PROBATION DEPARTMENT



**Paul Garrett**  
Chief Probation  
Officer



**Mike Morris**  
Probation Officer



**Lori Miller**



**Robb Fulker**  
Probation Officer

## PROBATION PLACEMENT

	2010	2009	2008
<b>MALE</b>	61	76	93
<b>FEMALE</b>	18	17	36
<b>TOTAL</b>	<b>79</b>	<b>93</b>	<b>129</b>

## PROBATION TERMINATION

	2010	2009	2008
<b>MALE</b>	67	82	79
<b>FEMALE</b>	27	25	30
<b>TOTAL</b>	<b>94</b>	<b>107</b>	<b>109</b>

Once a juvenile is adjudicated delinquent or unruly by the court and placed on Probation, the Probation Officer will meet with the juvenile and their family to review the Probation terms and conditions. The Probation Officer will explain the rules and clarify any questions from the juvenile and family. The Probation Officer will prepare all Court ordered referral forms and provide them to the family to review. The Probation Officer will keep in contact with all necessary service providers and school officials for the juvenile to work towards positive behavior and treatment progress.

Probation duties include, but are not limited to: compliance with court orders, developing case plans for clients, referrals to social services agencies, documenting contacts with clients and other involved parties, obtaining drug screens, attending court hearings and meetings regarding clients, and providing transportation for the client when necessary.

## WEST CENTRAL JUVENILE DETENTION PLACEMENTS

SCHOOL DISTRICT	2010	MALE	FEMALE	2009	MALE	FEMALE
GREENVILLE	52	40	13	51	37	13
MISSISSINAWA	7	7	0	10	8	2
ANSONIA	5	5	0	3	2	1
ARCANUM	7	7	0	7	6	1
VERAILLES	1	1	0	5	5	0
OUT OF COUNTY	3	3	0	1	1	0
FRANKLIN MONTROE	2	1	1	2	2	0
TRI-VILLAGE	2	2	0	5	5	0
BRADFORD	3	1	2	0	0	0
<b>TOTAL</b>	<b>83</b>	<b>67</b>	<b>16</b>	<b>84</b>	<b>66</b>	<b>17</b>

### INCARCERATED OFFENSES

OFFENSE	2010	2009
VIOLENT	15	10
NON-VIOLENT	18	26
PROBATION VIOLATION	50	35
PAROLE VIOLATION	0	4
<b>TOTAL</b>	<b>83</b>	<b>75</b>

### LEVEL OF OFFENSES

OFFENSE	2010	2009
FELONY	12	10
MISDEMEANOR	27	26
PROBATION VIOLATION	44	35
PAROLE VIOLATION	0	4
<b>TOTAL</b>	<b>83</b>	<b>75</b>

# MENTAL HEALTH LIAISON

## Phil Suman



### Program Information

The Juvenile Court Mental Health Liaison has been in effect since the fall of 2005. This position is cooperatively supervised and funded between the Darke County Mental Health Clinic and the Darke County Juvenile Court. This position was established to provide a link between the juvenile court staff and mental health professionals. This position also serves as a consultant for mental health issues and service plans at the Michael's Resource and Treatment Center, and as a direct mental health service provider for adolescents and families involved in juvenile court. Additionally, the professional in this position provides preliminary mental health assessments and referrals for juvenile court involved adolescents as well as consultation with children's services staff on appropriate cases.

### Program Goals

The goals of this program include:

1. Assessment and identification of clinically significant mental health needs for juvenile court involved youth;
2. Consultation with juvenile court and Darke County Job & Family Services staff to identify, refer and implement appropriate behavioral intervention services, with primary goal of decreasing out-of-home placements;
3. Provision of behavioral healthcare services for adolescents and families when appropriate;
4. Provision of crisis intervention services when appropriate.

### Referrals

Referrals for services will come primarily from the juvenile court staff through the intake or adjudication process. Occasionally adolescents will be identified and referred by other sources including school personnel, individuals, or primary care medical staff.

### CASE LOAD Fiscal Year 2010

#### Referred Cases by Court Order/Probation Department

48 cases for mental health assessment

# RECOVERY SERVICES LIAISON

## Gail Whittington



### Program Information

The Recovery Services Liaison formalized an already close working relationship between the Court and Darke County Recovery Services. This position was created in 2007. The position formally created a linear relationship among adolescents, their families, court personnel, and recovery and support services to each variable. The position was originally designed for females within the court system and has expanded to include males.

### Goals/Duties

1. Consult with Court personnel regarding incoming cases and potential courses of action.
2. Provide court based interventions when substance abuse is an issue.
3. Train probation officers.
4. Collaborate with other service providers as needed.
5. Home visits with probation officers.

### Collaborations

Darke County Mental Health  
 Intersystem Diversion Team  
 Schools  
 Health Department  
 Michael's Home  
 Gateway Youth Services  
 Mentoring Programs

Probation Department  
 Judicial System  
 Job and Family Services  
 County Home  
 Law Enforcement  
 Family Health  
 CASA

### CASE LOAD Fiscal Year 2010

#### 69 Referred Cases by Court Order/Probation Department

\*These numbers do not include Diversion Education, Smoking Cessation, Group Work (Day Treatment and Young Men's Group), and Strengthening Families which have been conducted through Darke County Recovery for at-risk youth from the court system.

\*\* Interventions involved multiple sessions with participants regarding a multiple of presenting issues being dealt with.

# **DARKE COUNTY CASA COURT APPOINTED SPECIAL ADVOCATE**

**Kay Robbins**



To provide a **Court Appointed Special Advocate** for abused, neglected or dependent children in juvenile court proceedings.  
Volunteers will advocate for the best interests of the children in an effective, timely professional manner until the case is permanently resolved.

**Every Child must have a voice in court!**



# The Michael's Resource & Treatment Center

**Scott A. Lind, Director**



1115 East Main Street, Greenville, Ohio 45331 (937) 548-6838

The Michael's Resource & Treatment Center is a ten bed community based treatment facility for unruly and delinquent males 11 to 17 years of age. It uses a cognitive behavioral treatment curriculum to influence negative behaviors and thoughts. The facility allows juveniles the opportunity to remain in Darke County while receiving treatment and support from local service providers. The Michael's Resource & Treatment Center works closely with Darke County Recovery Services, Darke County Mental Health Services, Darke County Children Services, Gateway Youth Services and local school systems.

The Michael's Resource & Treatment Center is operated by Darke County Juvenile Court and is funded by the Darke County Commissioner's and Federal Title IV-E monies. It is licensed by the Ohio Department of Jobs and Family Services.

# Michael's Resource & Treatment Center 2010 vs. 2009

## ADMISSIONS/INTAKES

AGE	2010	2009
12	2	0
13	1	1
14	3	3
15	1	2
16	4	6
17	2	4
<b>TOTAL</b>	<b>13</b>	<b>16</b>

## 2010 RESIDENT OUTCOMES

AGE	RESIDENTS	DISCHARGED	SUCCESSFUL	UNSUCCESSFUL
12	2	0	0	
13	1	0	0	
14	6	4	3	1
15	3	2	1	1
16	7	3	2	1
17	4	4	4	
<b>TOTAL</b>	<b>23</b>	<b>13</b>	<b>10</b>	<b>3</b>

\* 14 Year old placed at Central Ohio Boy's Academy for a period of six months.

\* 15 Year old placed at David L. Brown Youth Center. He later went AWOL from that placement and placed at West Central Juvenile Detention Center for six months

\*16 Year old discharged due to inappropriate behavior.

## 2009 RESIDENT OUTCOMES

AGE	RESIDENTS	DISCHARGED	SUCCESSFUL	UNSUCCESSFUL
12	1	1	1	
13	2	1	0	1
14	3	1	0	1
15	4	2	2	
16	7	4	4	
17	6	4	4	
<b>TOTAL</b>	<b>23</b>	<b>13</b>	<b>11</b>	<b>2</b>

# 2010 LOCAL SERVICE PROVIDERS

## DARKE COUNTY CHILDREN SERVICES

SERVICE	RESIDENTS
CUSTODY/CASE MANAGEMENT	15

## DARKE COUNTY RECOVERY SERVICE

SERVICE	RESIDENTS
DAY TREATMENT GROUP	8
YOUNG MEN'S GROUP	9
INDIVIDUAL COUNSELING	4

## DARKE COUNTY MENTAL HEALTH

SERVICE	RESIDENTS
INDIVIDUAL COUNSELING	9
GROUPS	10
MEDICATION	7
HOME-BASED SERVICES/CASE MGT.	5

## GATEWAY YOUTH SERVICES

SERVICE	RESIDENTS
THE ZONE	8

## LOCAL SCHOOL SYSTEMS

SCHOOL	RESIDENTS
GREENVILLE CITY SCHOOLS	11
GATEWAY ALTERNATIVE SCHOOL	8
DAY TREATMENT/CELINA	3
ARCANUM SCHOOL DISTRICT	1

## DARKE COUNTY FAIR GROUNDS

SERVICE	RESIDENTS	TOTAL HOURS
COMMUNITY SERVICE HOURS	12	340